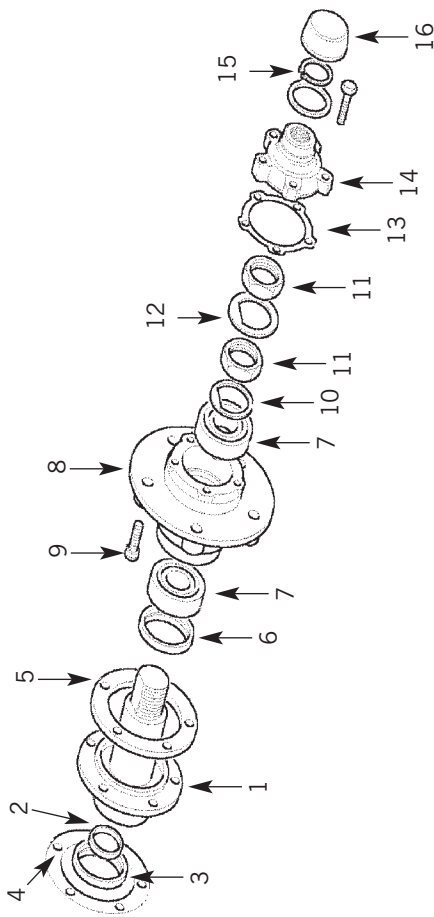


Hub Assembly

Front



UP TO CHASSIS NO. KA 930455 (- 93)

1	FRC4320	STUB AXLE FRONT	2
2	FRC3099	SEAL - STUB AXLE	2
3	FRC4319	SLEEVE - FRONT AXLE	2
4	FTC3648	GASKET - STUB AXLE	2
5	FRC2310	LOCKING PLATE	2
6	FTC4785	SEAL - HUB - INNER	2
7	STC4382	BEARING - HUB	2
8	FTC942	HUB ASSEMBLY	2
9	FRC5926	STUD - STUB AXLE	10
10	FTC3185	LOCKING WASHER	2
11	FTC5241	LOCKING WASHER*	2
12	FRC8700	LOCKNUT	4
13	FTC3179	LOCKING WASHER	2
14	571752	GASKET - DRIVE SHAFT	2
15	FTC3988	GASKET - DRIVE SHAFT	2
16	FRC5806	FLANGE - DRIVE SHAFT	2
17	549473	CIRCLIP	2
18	FRC4377	CAP	2

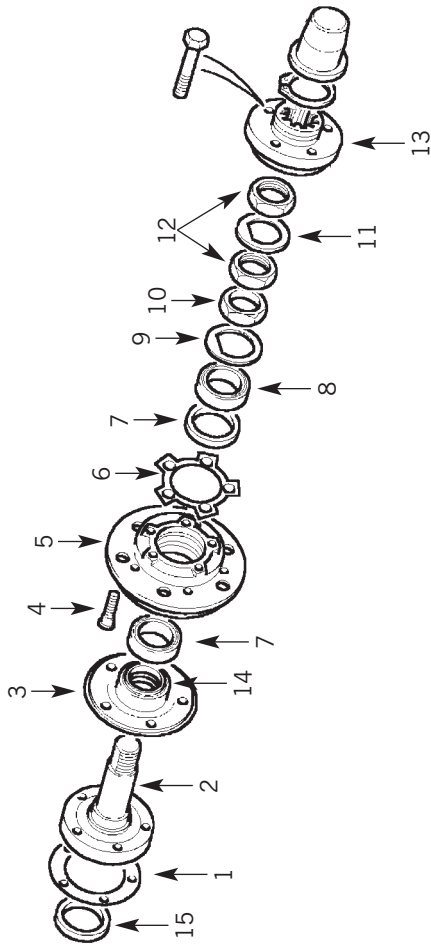
CHASSIS NO. LA 930456 - WA 159806 (93-99)

1	FTC3154	STUB AXLE FRONT	2
5	FRC2310	LOCKING PLATE	2
6	FTC4785	SEAL - HUB - INNER	2
7	STC4382	BEARING - HUB	2
8	FTC942	HUB ASSEMBLY	2
9	FRC5926	STUD - STUB AXLE	10
10	FTC3185	LOCKING WASHER	2
11	FTC5241	LOCKING WASHER*	2
12	FRC8700	LOCKNUT	4
13	FTC3179	LOCKING WASHER	2
14	571752	GASKET - DRIVE SHAFT	2
15	FTC859	FLANGE - DRIVE SHAFT	2
16	FTC5414	CAP	2

* FROM TA 996983

Hub Assembly

Rear



UP TO CHASSIS NO. KA 930455 (- 93)

1	FTC3649	GASKET - STUB AXLE	2
2	FRC8540	STUB AXLE	2
3	FRC3147	SPACER	2
4	FRC6137	STUD	10
5	FRC8555	HUB ASSEMBLY	2
6	FRC3988	GASKET	2
7	RTC3429	BEARING	4
8	FRC8222	SEAL	2
9	217352	LOCK WASHER	2
10	FRC8227	SPACER	2
11	FRC8002	LOCK WASHER	2
12	FRC8700	LOCK NUT	4
13	FRC5806	FLANGE	2
14	FTC4785	OIL SEAL	2

CHASSIS NO. LA 930456 - WA 159806 (93-99)

1	FTC3650	GASKET - STUB AXLE	2
2	FTC3188	STUB AXLE - 90	2
2	FTC1740	STUB AXLE - 110	2
3	FRC2310	LOCKING PLATE	2
4	FRC5926	STUD	10
5	FTC942	HUB ASSEMBLY	2
6	571752	GASKET - STUB AXLE	2
7	STC4382	BEARING	4
9	FTC3185	LOCK WASHER	2
9	FTC5241	LOCK WASHER*	2
11	FTC3179	LOCK WASHER	2
12	FRC8700	LOCK NUT	4
13	FTC859	FLANGE (110)	2
14	FTC4785	OIL SEAL	2
15	FTC5268	OIL SEAL	2

