



INSTALLATION INSTRUCTIONS

For 67930 Rock Sliders

1984-2001 Jeep Cherokees

As you read these instructions, you may see **NOTES**, **CAUTIONS** and **WARNINGS**. Each message has a specific purpose. **NOTES** are additional information to help you complete a procedure. **CAUTIONS** are safety messages that indicate a potentially hazardous situation, which, if not avoided, may result in minor or moderate injury. A **CAUTION** may also be used to alert against unsafe practice. **WARNINGS** are safety messages that indicate a potentially hazardous situation, which, if not avoided could result in serious injury. **CAUTIONS** and **WARNINGS** identify the hazard, indicate how to avoid the hazard, and advise of the probable consequence of not avoiding the hazard. **PLEASE WORK SAFELY!**

NOTE: This product will not fit with other aftermarket side rail protectors.

PARTS LIST FOR 65852

PART NO.	QUANTITY	DESCRIPTION
67926	1	Rock Slider, LH
67927	1	Rock Slider, RH
67928	1	Bracket Kit
67929	1	Hardware Kit

TORQUE SPECIFICATIONS

<u>BOLT SIZE</u>	<u>TORQUE</u>
1/4 inch	12-16 ft. lbs.
3/8 inch	32-35 ft. lbs.
1/2 inch	52-56 ft. lbs.

1. Install the driver's side rock slider. The rock sliders are side specific. Due to the body taper of the vehicle the mounting brackets that are welded to the tubes extend more at the rear of the slider. **See Figure 1 and 2** to determine the appropriate side.

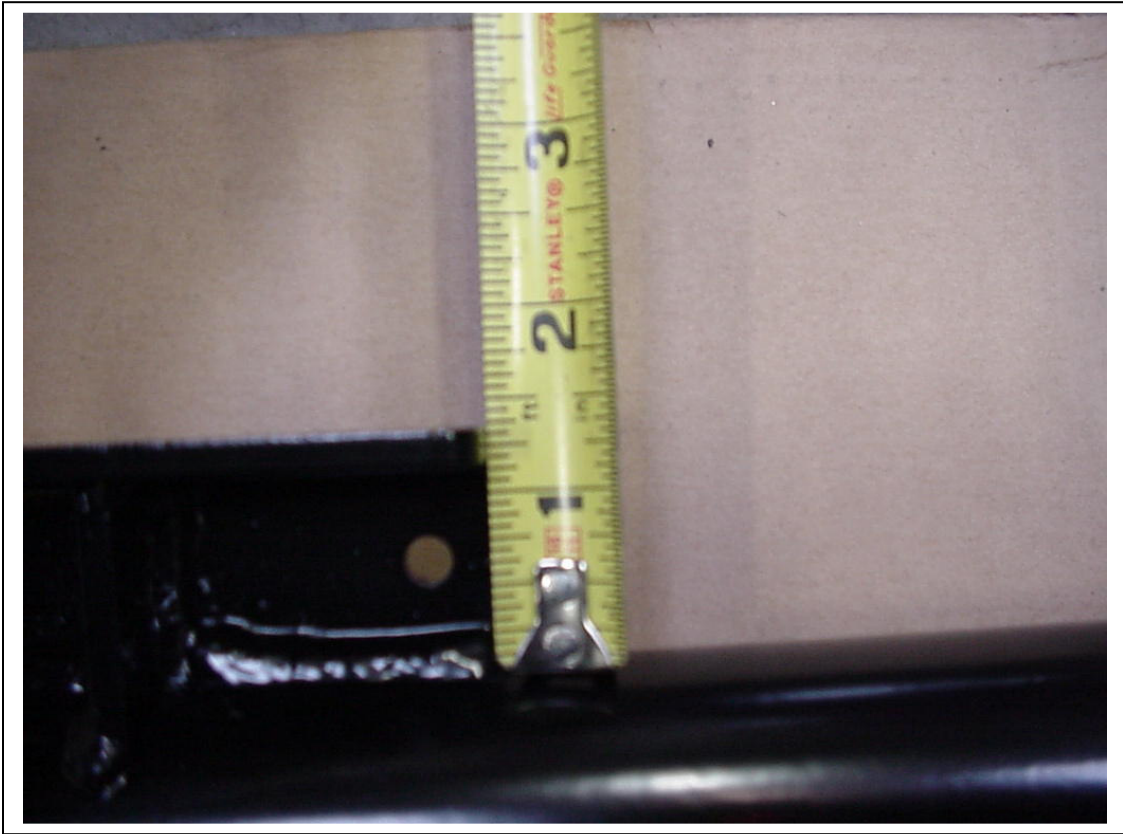
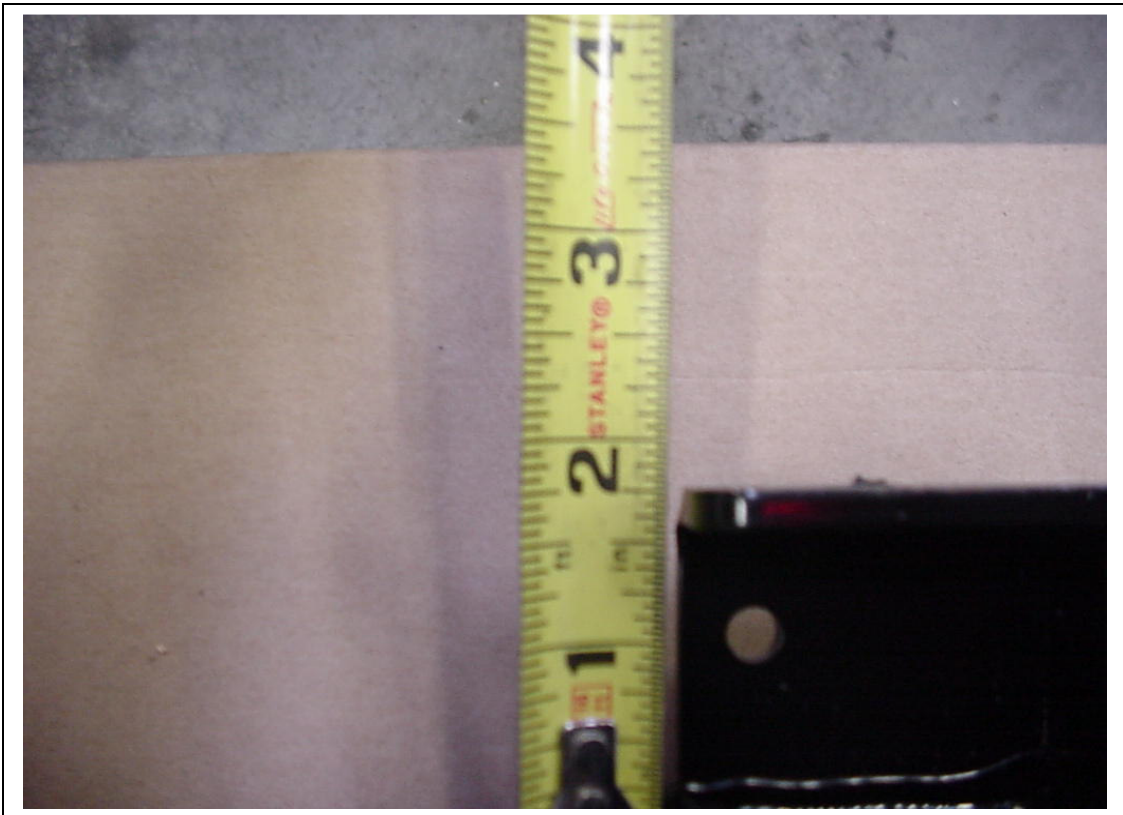


Figure 1 Above, Front of Slider. **Figure 2** Below, Rear of Slider.



2. Hold the rock slider in place between the fender flares. **See Figure 3 and 4.** Use blocks to hold the rock slider in place between the fender flares of the vehicle. While holding the rock slider, mark the 8 holes on the body seam using the rock slider as a guide. You can also mark the front edge of the first mount and then use a tape measure to mark the holes, **See Figure 5.**



Figure 3, Locate rock slider between fender flares.

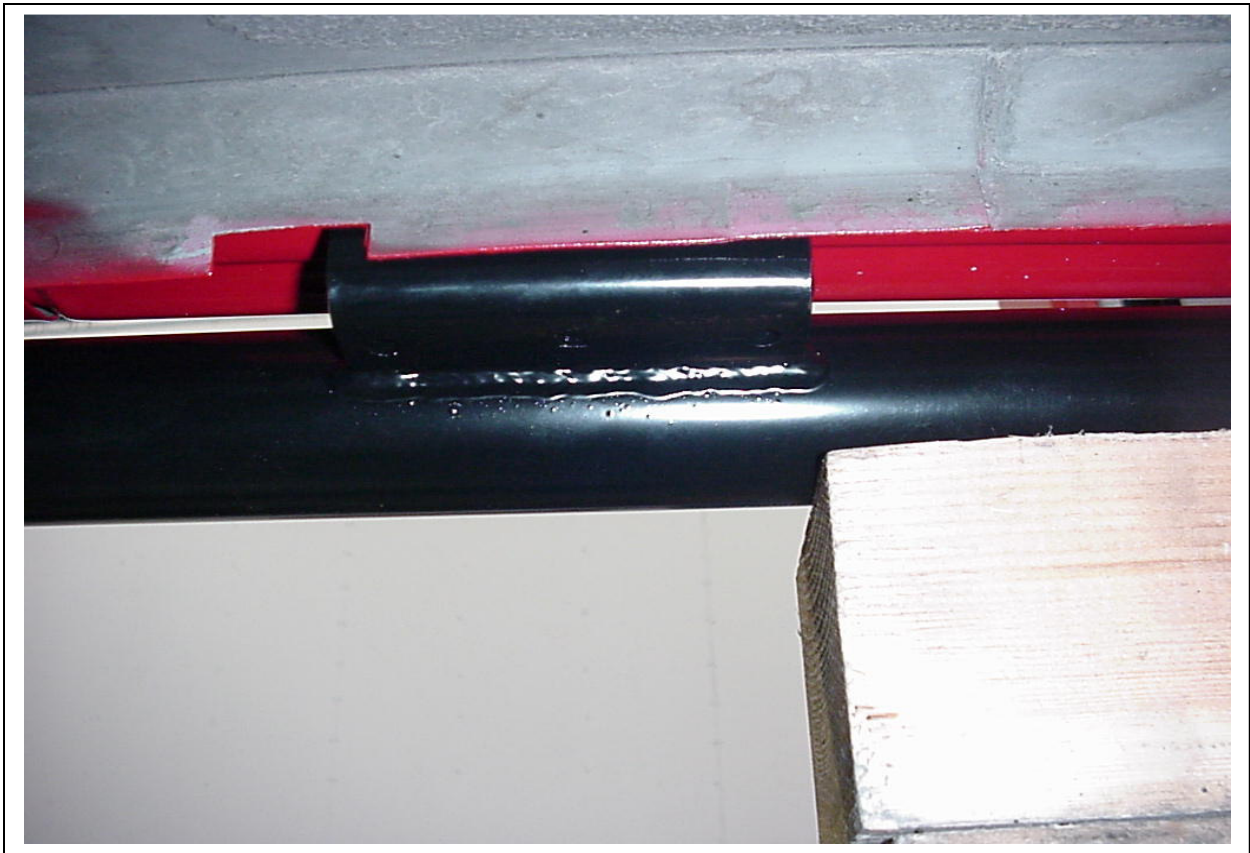


Figure 4, View from back of body seam.

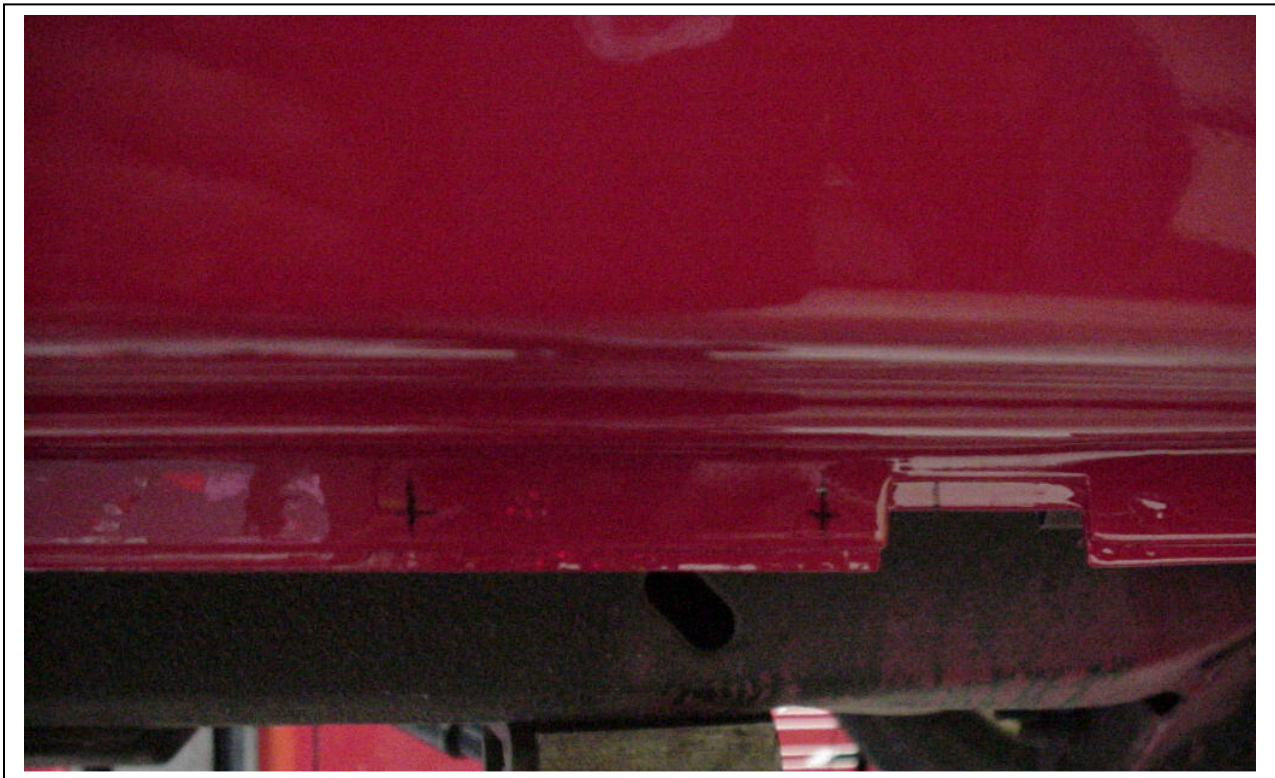


Figure 5, Marked Holes.

3. Double check all 8 holes to ensure the locations along the body seam are correct and the distance up and down is consistent. Once all 8 of the holes are marked, use a center punch to ensure correct drilling locations. Drill the marks using a 1/4" drill bit and drill motor. **See Figure 6.**



Figure 6, Drilled Holes.



WARNING



Drilling operations can cause flying metal chips. **WEAR SAFETY GOGGLES.** Flying metal chips can cause eye injury.

4. Mount the rock slider to the body seam using the 1/4" hardware. Insert a bolt through the mounting bracket on the rock slider and then the body seam. Install the backing plate on the backside of the body seam and install lock nut to the bolt. **See Figure 6.** Once all 8 bolts are installed and the backing plates installed, tighten all 1/4" hardware to previously specified torque.



Figure 7, Rock Slider installed with backing plates.

5. With all 8 mounting bolts torqued, install the support brackets to the rock slider mounts and the sub floor of the vehicle. Use Figure 8 to determine the location of the brackets. On the third mount, a plug will need to be removed from the floor before install the support bracket. Install the appropriate brackets to the mounts on the rock slider using the ¼" hardware. Install a bolt and flat washer through the support bracket and then the rock slider mount. Tighten a lock nut onto each bolt. Torque to the previously stated torque spec. See Figure 8 and 9.

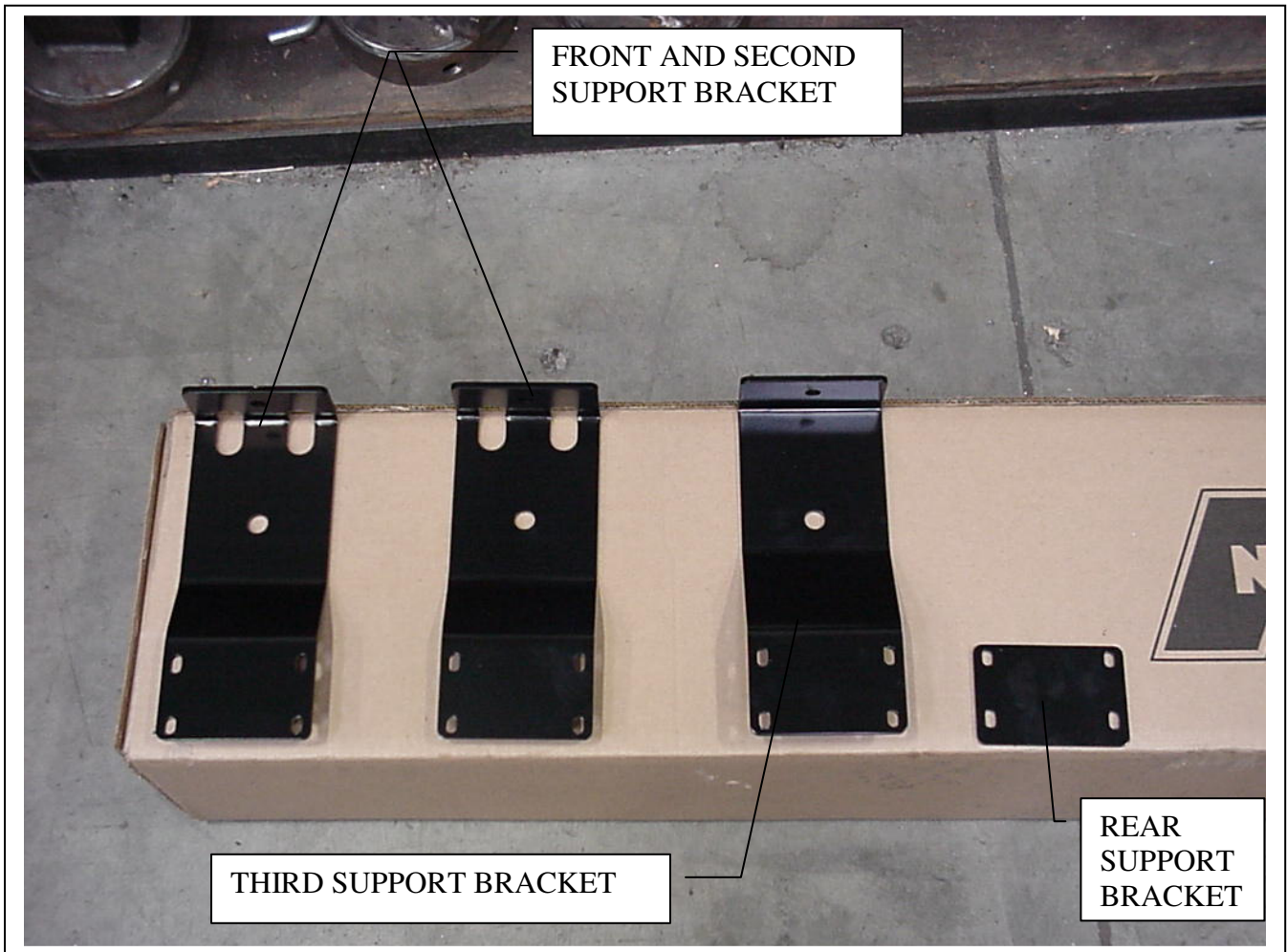


Figure 8, Support Bracket identification.

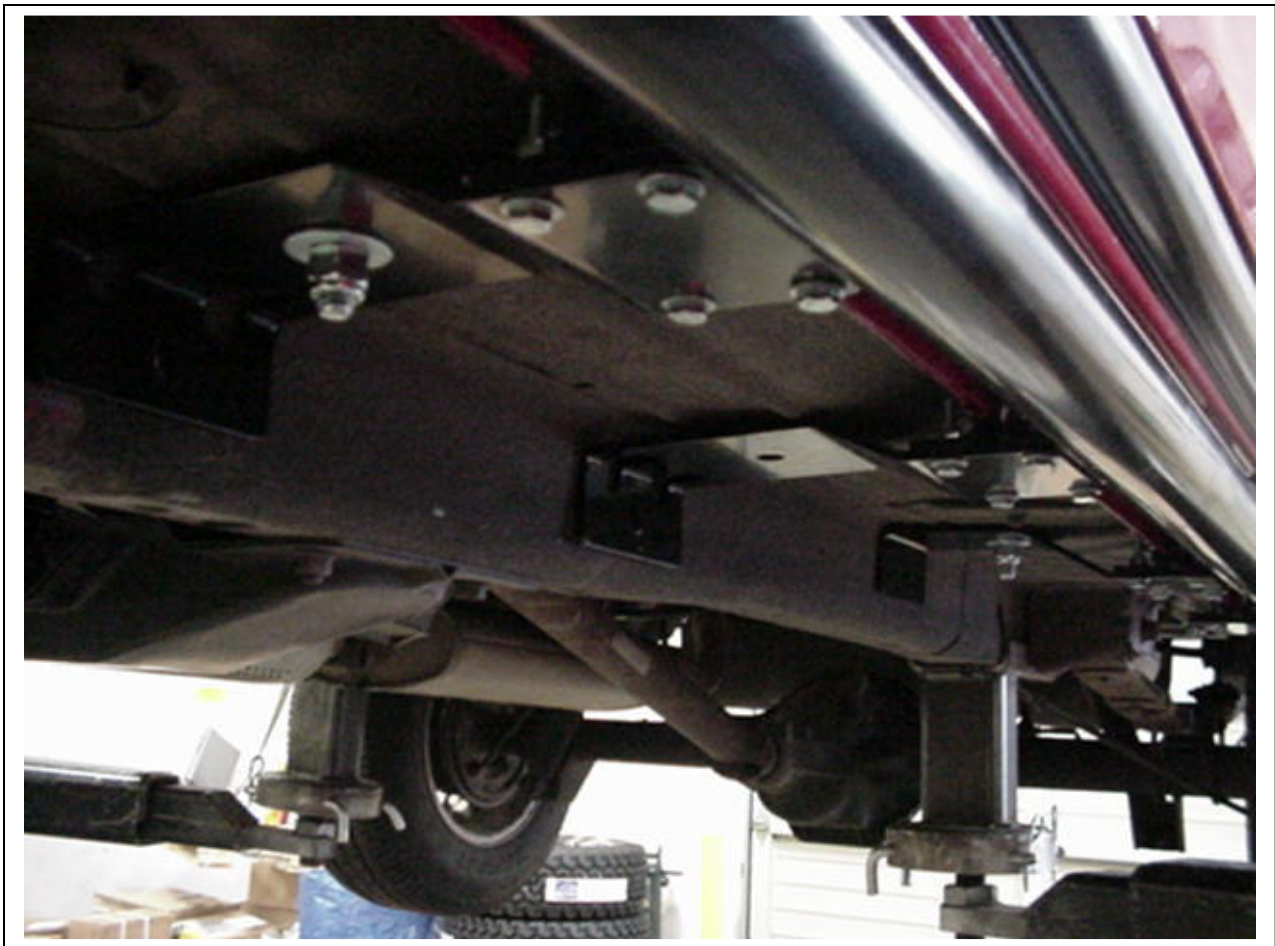


Figure 9, View of support brackets installed to Rock Slider mounts.

6. Once all of the support brackets are installed to the rock slider mounts, mount the support brackets to the floor of the vehicle. Carefully remove the plastic doorsill covers and lift up the carpet to gain access to floor mounting holes. It has been found to be easier to locate some of the floor holes if the seat is temporarily unbolted from the floor. For the forward most hole, place a block between the carpet and the floor to avoid drilling into the carpet. Drill a $\frac{1}{2}$ " hole through the floor from the bottom side using the support bracket as a guide. Once the hole is drilled, install a $\frac{1}{2}$ " bolt and black washer through the floor and through the support bracket. **See Figure 10.**



WARNING



Drilling operations can cause flying metal chips. **WEAR SAFETY GOGGLES.** Flying metal chips can cause eye injury.



Figure 10, Front floor hole under carpet.

7. From the bottom install a square spacer between the ribs in the floor by lifting the bolt up slightly. Install a $\frac{1}{2}$ " flat washer and lock nut onto the bolt and torque to previously stated torque spec. **See Figure 11.**

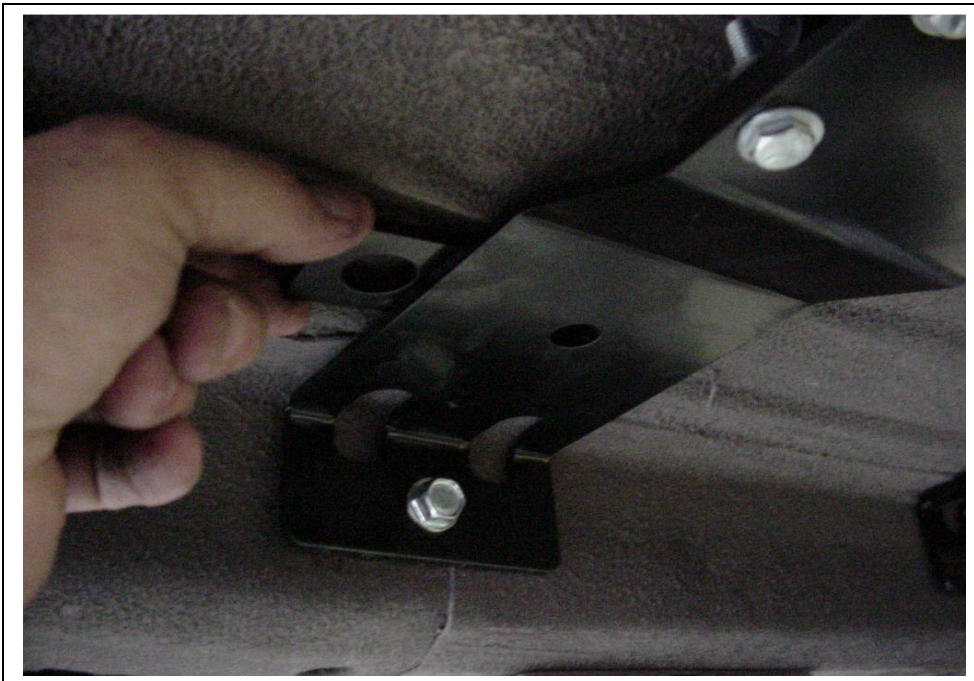


Figure 11

8. On some models you may not be able to drill a hole for the second support bracket due to a change in the floor/seat support ribs in the floor of the vehicle. If you have access to the second support bracket floor hole, repeat step 6.
9. For the third mounting bracket, place a block under the carpet to hold the carpet up. Unbolting the seat will greatly ease this operation. Pop the factory plug out of the floor and install a ½" bolt and black round spacer through the hole in the floor. Install a square spacer as shown in figure 11 and install a ½" flat washer and lock nut and torque.
10. Install the rear support bracket to the back rock slider mount using the ¼" hardware only. **See figure 12.**



Figure 12, Rear support bracket

11. Once all of the floor bolts are installed, place the carpet back in place and install the plastic doorsills and seats.

- Using a drill motor and a 5/16 bit, drill a hole into the sub frame rails using the support brackets as a guide. Once the holes are drilled install the supplied 3/8" self-tapping bolts through the support brackets and the sub frame. **See Figure 13.**



WARNING



Drilling operations can cause flying metal chips. **WEAR SAFETY GOGGLES.** Flying metal chips can cause eye injury.

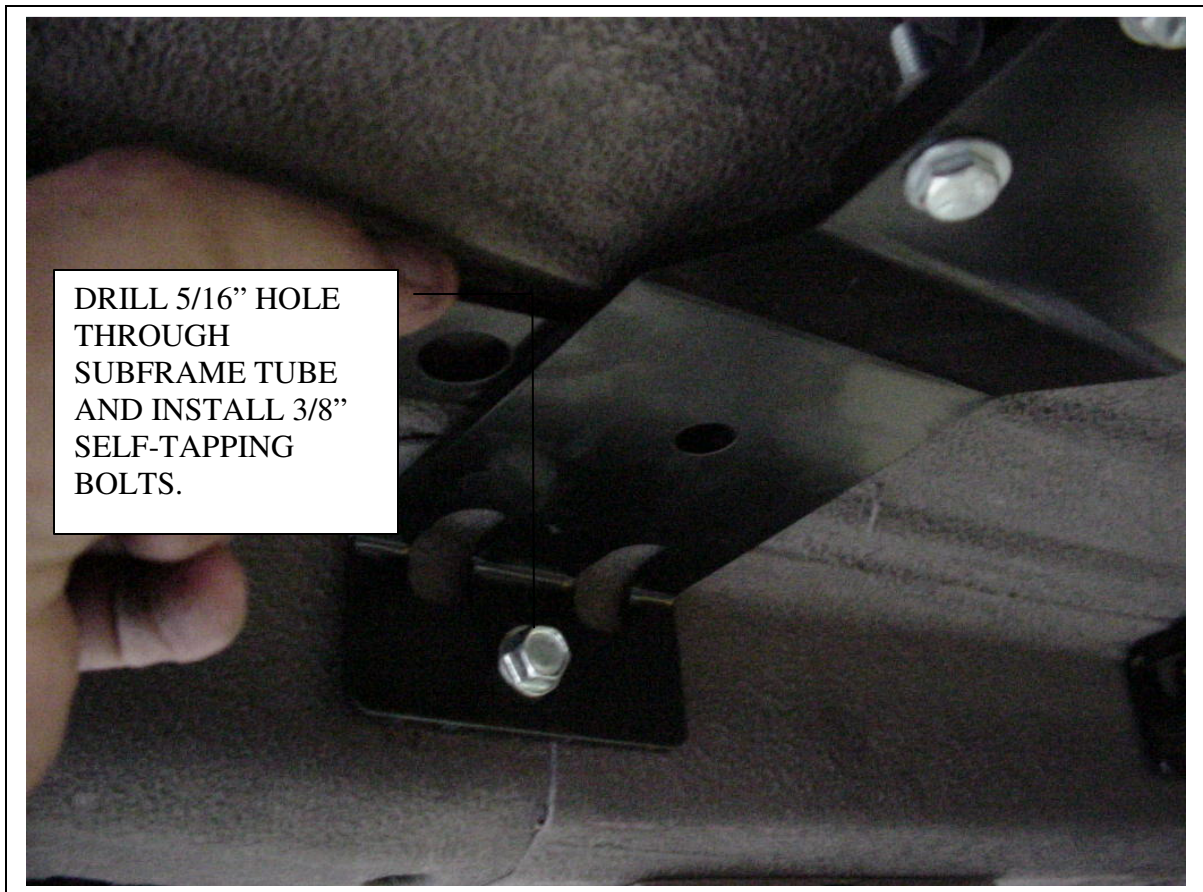


Figure 13, Sub frame holes.

- Check all supplied and factory bolts for proper torque.